

GreenKeeping

Keeping the industry on course

• January 2019

ISSUE: 153 • £8.00

CUT TO THE CHASE

The course manager of The Chase Golf Club in Staffordshire, **Simon White**, details how rough management and a grass exchange programme is good for the ecology of the site, the playing surfaces and the golf club's bottom line





Get more than ever with a Toro® Outcross

A new breed of super-duty utility vehicle



Get more flexibility in one machine.

The Toro Outcross 9060 super-duty utility vehicle.

There's nothing like the Toro Outcross 9060. Toro's first super-duty utility vehicle that breaks the mould with its revolutionary design. Now, greenkeepers can do a lot more with much less. Uniquely combining the best of both a tractor and a utility vehicle, the Outcross does the work of multiple machines in one compact package.

reesinkturfcare.co.uk

Get more from your turfcare partner this year:

More products > More advice > More training > More finance

Reesink Turfcare UK Limited is authorised and regulated by the Financial Conduct Authority. Images shown for illustration only.



Member of Royal Reesink

EDITORIAL ADVISORY PANEL



DR JOHN DEMPSEY
BSc (Hons), PhD
Course manager,
Royal Curragh Golf Club
and turfgrass scientist



PETER JONES
MSc, MBPR, RIPTA
Golf course consultant and
former course manager
www.pja-golf.co.uk



NOEL MACKENZIE
BSc (Hons), MBPR
Turf agronomist and former
golf course consultant and
greenkeeper



JONATHAN SMITH
BSc (Hons) MA
Chief executive of the Golf
Environment Organisation
www.golfenvironment.org



DR RUTH MANN
BSc (Hons), MSc, PhD, MBPR
Head of research
at the STRI
www.stri.co.uk



DR KEITH DUFF
Advisory member of The
R&A's Golf Course
Committee and former chief
scientist with English Nature



LAURENCE PITHIE MG
Europe's first Master
Greenkeeper and golf
course consultant
www.turfmasterone.co.uk



DR KATE ENTWISTLE
CBiol, MIBiol, MBPR
Turfgrass pathologist and head
of The Turf Disease Centre
www.theturfdiseasecentre.co.uk

regulars

- 02 Industry News
- 12 Seeds and Turf Buyer's Guide
- 16 Course Manager Profile: Simon White
- 34 A Day in the Life: Mat Edwards

features

- 06 How much does winter weather impact on drainage on a golf course and, in turn, its ability to remain open every day of the year?
- 09 Product review: Aquavita – a microbial and soil biochemistry solution for plant health
- 24 A look at many of the companies and products that will be on show at BTME in Harrogate this month



06



16



24



34

• Editor: Alistair Dunsmuir • Chief Sub Editor: Tania Longmire • Art Director: Alan MacKenzie-Morris
• Associate Publisher: Steve Eaves • Production: Tom Burnett-Godfree • Database Manager: Giedrius Slegieris
• Publisher: David Rose • Chairman: Anthony Hawser • Email: greenkeeping@unionpress.co.uk

Published by Union Press, 69 Southwark Bridge Road, London SE1 9HH Tel: 020 7803 2453 Web: greenkeepingeu.com
Social media: @greenkeepingmag (Twitter) www.facebook.com/Greenkeeping www.linkedin.com/company/greenkeeping

Annual subscription: United Kingdom: £79.00 Europe: £122.00 Rest of World: £153.00

Recruitment and Subscription Enquiries: Lewis O'Sullivan, email: lewis@greenkeepingmagazine.com, tel: 020 7803 2427

Union Press Ltd. Printed and distributed by Buxton Press. All rights reserved. No parts of the contents of this publication may be reproduced or stored in a retrieval system or transmitted in any form or by any means electronic, mechanical, photocopying, recording or otherwise, without written permission of the copyright holder

We had an average of 14
greenkeeping vacancies
per day in December.

Visit: jobs.thegolfbusiness.co.uk



Printed by Buxton Press, Winner, Print Week
'Printing Company of the Year' 2015 to 2017

'Police failings' led to greenkeeper's death

An inquest has heard that a greenkeeper at Wentworth Golf Club died after deliberately driving his van into the River Thames, following a night of drinking.

The inquest jury ruled police failings in a control room contributed to the drowning of John Byrne, according to the *Daily Mail*.

They heard how officers were told not to enter the water where Byrne was trapped in his van screaming for help, and instead watched on from the riverbank.

A coroner investigating his death ruled that the jury could therefore not return a verdict of suicide.

After almost nine hours of deliberation, the jury reached a narrative verdict and blamed Surrey Police for a series of



blunders in its control room.

The inquest in Woking had heard how police sergeant Danielle Mead had gone home from duty and had not personally handed over the incident to a colleague.

The jury also heard that the alarm over Byrne, who had previously said he was going to drown himself in the Thames at Shepperton, was downgraded from a police response of one hour to no response at all.

This was due to an automatic regrading by Surrey Police's ICAD computer system which the sergeant was unaware of.

The blunder meant that for more than an hour, Surrey Police was unaware of the impending tragedy and no police response was dispatched.

The inquest heard how Mead had gone home from duty and had not personally handed over the incident to a colleague, while Inspector Gary Cross ordered his men not to enter the water to try and save Byrne.

During this time, Byrne placed planks of wood on the riverbank to use as a launch pad for driving his van into the water.

Officers eventually arrived at the riverbank and watched on

helplessly as Byrne screamed, shouted and cried for help to save him as his van slowly became submerged bonnet-first into the 12 feet deep river.

Cross issued an order that his team should not go into the water to try to save Byrne as it was too dangerous in the dark and cold.

The jury did not comment in the verdict on Cross' decision but instead issued a rider to their narrative verdict that the actions of Surrey Police during the evening of December 8, 2016 contributed to the father's death.

Coroner Darren Stewart ruled that the jury of seven men and four women could not return a finding that he had died as a result of suicide.

Removal of propiconazole 'will have big impact'

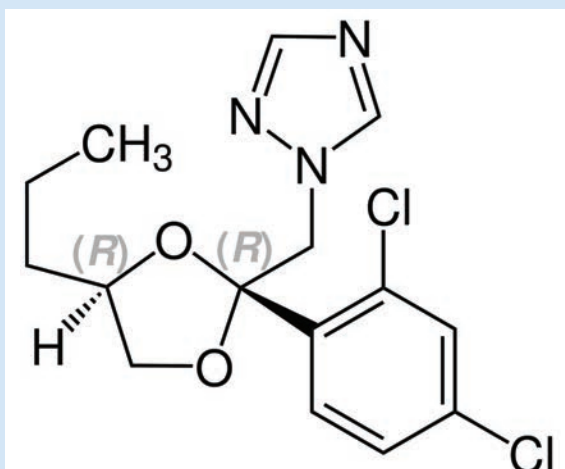
The EU Commission has announced that it will not renew the approval for the fungicide active ingredient, propiconazole.

As a result, all products containing propiconazole for any market, including turf management, will be withdrawn from sale over the coming months.

Approval was not renewed because it failed the cut off criteria given its classification linked to the potential to give rise to groundwater metabolites above permitted levels.

"This will impact significantly on control in grassland, particularly given the earlier loss of iprodione, but the UK government supported non-renewal," explained Kate Hopkins, administrator at the Amenity Forum.

The date set for the final sale of products containing the active in the UK is June 19, 2019.



"We recognise the concerns that result from this decision," added Hopkins.

"The continuing loss of active ingredients in the amenity market means that the quality of our sportsturf and amenity spaces is likely to suffer. In this particular case, the loss of any fungicide active is a concern in terms of loss of

quality and the range of tools for sportsturf managers to avoid current and potential disease resistance in the future.

"Integrated approaches to weed, pest and disease management are our priority but this needs to be based upon the widest options of non-chemical and chemical approaches, implemented by professionals fully supportive of the Amenity Forum's commitment to best practice and to producing amenity spaces which are safe and healthy environments, fit for purpose."

A member of the Amenity Forum added: "The loss of this active does significantly reduce the sector's options with the further loss of formulated products.

"This revocation in effect means that we have lost a multisite active ingredient which reduces further the number of modes of action we have available in the amenity sector."

EDUCATE EXHIBIT EVOLVE

BTME 2019 | 22-24 January 2019
Harrogate Convention Centre | btme.org.uk

With 250 hours of education delivered by more than 60 world-class speakers, Continue to Learn is Europe's most influential and important golf industry event.

The new layout for BTME 2019 sees Continue to Learn positioned right at the heart of the turf management industry's leading exhibition.



BIGGA
British and International
Golf Greenkeepers Association



Mental health charity built flood defence at golf club

A mental health charity that provides horticultural training has helped to create an environmentally-friendly flood defence to protect Rothbury Golf Club in Northumberland.

Volunteers from Blyth Star Enterprises – Stakeford Nurseries played a key role in a project to plant 1,200 shrubs and bushes at the club, to create a natural defence against flood water from the River Coquet.

Greenkeepers estimate that up to 10 metres of the river bank adjacent to the golf club's 13th hole has steadily eroded into the river over the past seven years.

During periods of heavy rainfall, the swell of the river covers the green entirely, dragging debris and fallen trees with it – causing costly damage to the course.

As part of its Next Steps project, which aims to provide those people who have participated in the horticultural training programme at Stakeford Nurseries with community volunteering experience, Blyth Star Enterprises teamed up with Rothbury Golf Club and the

Environment Agency to develop a permanent solution to save the 13th hole.

"The Rothbury Partnership project to help conserve the golf course fits perfectly with our ethos so we were delighted to get involved," said Gordon Moore, chief executive at Blyth Star Enterprises.

"Working with the club's greenkeepers and the other partners, we agreed to create a natural flood wall out of low-growing scrub plants such as dogwood, hazel and thorn bushes which, once mature, will help filter out any debris brought by the river across the golf course during periods of flooding.

"Groups of service users from the nurseries, supported by our staff and volunteers, spent two weeks at the golf club planting the bushes, which we will help to nurture from now until they reach maturity.

"Our Next Steps project is about identifying new environments for our service users from the Stakeford Nurseries to further develop their understanding of horticulture and apply their

skills to initiatives which in some way benefit the local community."

Graham Stephenson, greenkeeper at Rothbury Golf Club, said: "It was great to have the support of Blyth Star Enterprises on this project.

"The new scrubland will provide much-needed protection for the golf course against damage caused by rising flood water, but will also help to enhance the beauty of the course once the plants reach maturity, providing a new habitat for local wildlife in the process.

"The greenkeeping team from the golf club did all the initial prep work to level the land and mark out the spaces for the shrubs and bushes to be planted but beyond that, the staff and service users from Blyth Star handled the rest.

"They were incredibly competent and we look forward to welcoming them back to the golf club in the future."

Blyth Star Enterprises helps support over 350 people living with severe and enduring mental ill health and or learning disabilities.

'Climate change increases frost damage to trees'

Global warming increases frost damage on trees in large areas of Europe, according to a new Finnish-Chinese study by researchers from the University of Eastern Finland, the Chinese Academy of Science and Zhejiang A&F University.

Climate change and increasing temperatures will diminish the occurrence and severity of spring frost events, which should reduce frost damages.

"However, global warming also has another, negative consequence: plants flower and leaf out earlier than they used to. As a result, the incidence of frost damages will increase," says Professor Frank Berninger from the University of Eastern Finland.

"Our research suggests that, as a result, trees will suffer increasing frost damages in

many places in Europe."

The study investigated the leafing out and flowering of 27 tree species across Europe over 30 years. The data was merged with climate data for the sites, and statistical models were used to understand patterns of potentially damaging frost events.

For many species and sites, their leafing out and flowering advanced beyond the last day of frost.

"Therefore, potentially harmful spring frost events became from frequent and more severe for many sites.

"For example, north-western Germany, which is an important fruit producing area in Europe, experienced substantial increases in the occurrence of spring frosts," Professor Berninger says.

The findings were reported in *Global Change Biology*.



Beacon Park GC to remodel its course

West Lancashire Borough Council is considering a planning application to carry out large-scale work at Beacon Park Golf Club in Wigan.

The proposal is for the driving range to be remodelled to

'The developers say the proposal will attract more young golfers to the site and offer new facilities for members, which the club has wanted to do since 2011.'

The planning report concludes:



accommodate a footgolf facility and for changes to be made to the first hole's green and the second hole's tees.

Developers also want to create a mound and re-profile the land alongside the first fairway, remodel the ground between the first and final challenges on the 18-hole course and carry out associated landscaping work.

'Beacon Park has been the scene of bitter rows for years after Serco was permitted to dump large amounts of landfill waste on parts of the site,' states *Wigan Today*. 'This led to a massive dispute between golfers, backed by West Lancashire MP Rosie Cooper, and Serco along with West Lancashire Borough Council.

'The site is located within the green belt, but the provision of outdoor recreations is seen as appropriate development and the design strategy undertaken seeks to preserve the openness of the green belt in this area in what is already an undulating landscape used as a golf course.

'The proposed development would accord with the local plan, servicing the existing community and continuing to provide an outdoor sports and recreation facility.'

The footgolf course would require lowering existing contours, creating new footpaths and vehicle access, building steps and gates and installing a boundary fence.



Bronze Plaques... for the best courses...

*St. Andrews, Carnoustie, Royal Troon, Saunton, Royal Liverpool,
The Berkshire, Royal Portrush, West Lancashire, Notts and many more...*

Take a drain check

Amid pressure for the course to remain open at all times, how much does the winter weather of frost, rain, floods and snow affect golf greens' drainage? Turfgrass agronomist Paul Woodham investigates

Good drainage potential is a cornerstone of a good golf green, especially if we are looking to achieve year-round performance and playability. Maintaining play and healthy greens is an unsustainable challenge if the profiles are staying too wet for too long. Unfortunately for many, the weather patterns over recent years have created conditions where soil-based greens without a formal drainage system are simply not coping.

Dealing with winter conditions is never easy. At one point last winter, courses in the north west had experienced 75 per cent rain days in the six months since July 2017 and some recorded over two metres of rain in the previous year. It is difficult to say what the trend will be during climate change but the knock-on effect of greens staying too wet will most certainly create problems.

There is a demand for keeping play on main greens during winter months and keeping the course open. This is generally financially driven and golf clubs will not be profitable when closed or unsuccessfully trying to retain members who are dissatisfied with poor greens. There is also the pressure of clubs asking greenkeepers not to disturb the putting surfaces, especially if the greens have barely limped through the winter or suffered during wet autumn conditions. Perhaps this is where the problem of reduced drainage potential started?

The problem of soft and poor performing putting surfaces linked to the accumulation of excess organic matter has been well documented. Quite rightly, greenkeepers have maintained a focus on reducing organic matter to firm surfaces and improve playability, also creating conditions which will

favour the development of fine grasses.

Many of the cultural operations to reduce organic matter can be done relatively discretely with modern equipment. Operations such as micro-hollow coring, traditional coring, sand injected scarification or routine aeration and sand integration fit neatly into renovation windows and general maintenance.

Combine this with good control of nutrition and appropriate use of irrigation, and many will have a winning formula for agronomic maintenance of the upper profile. What is frequently forgotten or ignored is the need for deep aeration into compacted or interpacked soils. We are seeing putting greens softening down too easily where excess organic matter holds moisture high in the profile, but the problem often starts deeper down.

TORO®

Future-proof your irrigation with Infinity.
Countless benefits. Infinite possibilities.

Choose easy servicing and flexible expansion with Toro's Infinity sprinklers. With its Smart Access, you can now upgrade with ease and avoid unsightly turf scars left from digging up sprinklers as all serviceable parts can be accessed from the top, using just a screwdriver. Infinity. Much, much more than a great sprinkler.

reesinkturfcare.co.uk

Get more from your turfcare partner this year:

More products > More advice > More training > More finance

Reesink Turfcare UK Limited is authorised and regulated by the Financial Conduct Authority. Images shown for illustration only.



Member of Royal Reesink 

Sisis Rotorake TM1000 & Javelin Aer-Aid Aeration and Scarification with a difference

For more information
on our full range or a
no obligation demonstration
call **01332 824777**
or alternatively visit
www.sisis.com



sisis
Expert Surfaces

Visit
Stand
No 247
Red Zone
BTME
2019



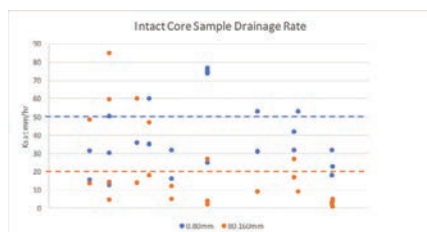
► drainage

Some of my most interesting 'STRI Programme' visits are carried out during the winter months. There is little merit taking the stimpmeter or 'Trueness Meter' out in the depths of winter but measuring firmness in relation to winter moisture levels is a necessary objective measurement. We will often measure the greens' performance at their best in summer conditions, but we also need to see them during the period when they are challenged by the pressures of winter play, checking the integrity of the green construction.

Measuring the infiltration of a putting surface is often a wake-up call. Six double ring infiltrometers are placed across a green to measure mm/hr infiltration. The results are typically disappointing on soil-based greens and prove the need to act. Whilst we would strive for an infiltration rate of 20mm/hr, a minimum threshold of >10mm/hr is more realistic.

Unfortunately, we rarely see even this and measurements between 1-3mm/hr are commonplace. The question is whether surface infiltration is being slowed due to the influence of organic matter, soil texture interfaces (change in dressing materials) or the interface where the years of dressing layers are interpacking with the original construction ameliorated topsoil rootzone.

In recent months I have started to replace the infiltrometer assessments with intact core sampling to measure a hydraulic conductivity rate through 0-80mm depth (the zone of organic matter and soil texture changes) and deeper at 80-160mm (entering the native soils and interface with subsoils). On occasion, deeper sampling 160-240mm is taken. The benefit of this test is that it is effectively taking your soil structure intact to the laboratory as the core samples are extracted and retained within sleeves,



Intact core sample drainage rate



It is possible to aerate without softening or overly disturbing the surface, but the need to deep solid tine must remain and be carefully scheduled at times when the soils are receptive to treatments and are not too wet

therefore the drainage rate measured will be the drainage rate potential through the green profile in situ.

The green average results are detailed in the image and we can see that there is a wide variance as suspected.

- 0-80mm depth samples averaged 36mm/hr (range 4-60) whereas 80 160mm depth averaged 1-60mm/hr
- A threshold of >50mm/hr is set for 0-80mm depth and >25mm/hr set for 80 160mm depth
- 68% of greens measured <50mm/hr at 0-80mm depth
- 72% of green measured <25mm/hr at 80 160mm depth
- 48% of greens measured <10mm/hr at 80 160mm depth
- 36% of 80-160mm depth samples failed to drain at >5mm/hr
- Several samples recorded 0-1mm/hr during the measured time but finally drained after 24 hours.

The evidence overwhelmingly suggests that soil-based greens are struggling to cope with the weather and playability demands, especially in wetter locations in the UK. Reducing organic matter will improve the situation in the upper profile but not at depth, and is the cause of organic matter not due to the conditions below?

Can drainage rates be improved by increasing the frequency and effectiveness of

deep aeration? Yes, but can this be done whilst finding a balance keeping the greens playable for the club? Some tools allow deep aeration to continue without softening or overly disturbing the putting surface, but the need to deep solid tine must remain and be carefully scheduled at times when the soils are receptive to treatments and are not too wet.

In practicality, if soils are compacting and failing to drain then is aeration alone going to resolve the issue? Probably not, but we can measure progress and the impact of increased cultural maintenance to determine the need for installing drainage.

At a time when there is an increasing need to demonstrate sustainability due to recent withdrawals of some key chemicals, the requirement to create the conditions favouring fine grass species is never more important.

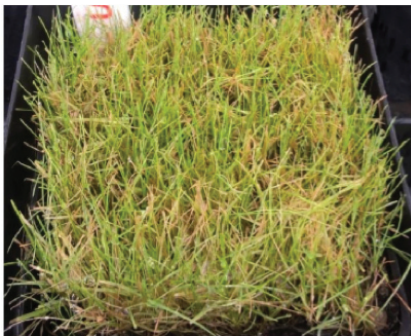
It has been more than 10 years since *The Disturbance Theory* was first published. Remember that it is called 'The Disturbance Theory' not 'The No Disturbance Theory'. Failing to deal with 'Phase 1' to improve drainage is a major flaw, restricting progress towards improvement and, as we see in drainage rate sample results, a decreasing spiral of decline during winter months for many.

The time to disturb is now.

Paul Woodham is the agronomy services manager at the STRI

Bringing their 'A' game

Aquatrols Europe speaks to us about the new product Attain, powered by AquaVita™ Technology



*Left: Untreated on 03/09/2018
Right: Treated with 10L/ha – image shows results 21 days after treatment*



What is the new technology that Aquatrols is launching?

Working in conjunction with our research and technology partners, Aquatrols is launching novel microbial and soil biochemistry solutions for plant nutrition, water management and plant health. The company's continuing work on soil-plant systems demonstrates new insights for soil science and nutrient management. By applying this knowledge, Aquatrols is developing innovative new solutions, in the form of AquaVita technology, that help to address the sustainability and environmental challenges facing the professional sports turf manager.

What do you mean by 'biochemistry' solutions for plant nutrition?

Biochemistry is the science of chemical compounds and processes that are generated by the activity of various organisms. Simply put, it is the chemistry of life. In the context of plant nutrition, interactions between plants and micro-organisms in the soil or, more specifically, their biochemical metabolites or by-products (such as various proteins, enzymes, organic acids and chelators) can have a significant impact on nutrient

availability, uptake and use. Aquatrols is dedicated to better understanding these interactions and translating these findings into effective biological products that can be used to improve plant nutrition in conjunction with water management and the soil:air:water balance in the rhizosphere.

Why focus on biochemistry?

The soil's biochemistry is incredibly complex. This presents a great challenge, since just beginning to unravel and understand this complex biochemistry and its applications may take decades. However, it also offers us the extraordinary potential for discovering new ways to support and enhance management practices. Better understanding the biochemical pathways and mechanisms that influence the soil-plant system will help us develop practical and effective solutions that enhance nutrient use efficiency. This will ultimately allow better utilisation of nutrient resources and more efficient performance.

How is this different from other traditional nutritional products?

Existing products rely on a chemical interaction taking place in the soil between the base nutrition ingredients used, with naturally occurring soil micro-organisms. While we look to natural sources for new product

technologies, we focus on unlocking nature's secrets to plant care and use that knowledge to complement modern management practices by improving their effectiveness or making them more sustainable. AquaVita technology helps to unlock and harness some of those naturally occurring mechanisms to improve plant nutrition and health.

Does that imply unnatural alteration of the soil interface?

No. We are not manipulating the genetics of organisms or plants, either in the lab or in the field. Instead, we are focusing on those agents that are already at work, the thousands and thousands of molecular-level triggers that may lead to certain positive responses in plants or soil microbial communities.

What are the specific benefits of this technology within the product Attain?

Attain uses the AquaVita technology to maximise the benefit of existing nutritional elements and supports consistent and sustainable root growth. It promotes optimal plant and soil health for all turf types. Minimal nutritional inputs are used in conjunction with the AquaVita technology component of the product to extend longevity. Water management programmes are complemented with the addition of an Aquatrols highly trusted wetting agent.

What scientific basis exists to support this approach?

A recent literature review by the US Biostimulant Coalition cited nearly 150 peer-reviewed journal articles of work done on biostimulant approaches. A report sponsored by the European Commission cited nearly 100 scholarly articles. New, more sophisticated molecular tools (many coming from human health and pharmaceutical industries) along with the super-computing power to drive bioinformatics analysis, are bringing the analysis of complex ecologies within reach. Our independent trials work with STRI and other global research organisations have shown a practical benefit in both bentgrass and ryegrass turf situations compared with untreated and previous market standards.



Two years interest free from Waste2Water

With environmental awareness and recycling on the agenda, Tim Earley looks at how Waste2Water's cost effective course machinery wash-off system benefits golf clubs

When we installed the first Waste2Water Recycling Wash System 19 years ago, the need to recycle was just being introduced. Now most households have a green bin / blue bin / brown bin / black bin and so on, and recycling is a big issue with large fines for non-compliance. Environmental awareness has come a long way since the turn of the millennium!

Environmental legislation

Environmental stewardship is now a legal requirement enforced by legislation. With the

recent extensive publicity I'm sure that everyone is aware it is a criminal offence to allow certain substances including mineral oils, detergents and chemicals to enter surface drains, watercourses or soakaways, causing groundwater pollution. Large fines of up to £50,000 and even imprisonment can now be levied in the event of a serious pollution incident.

EU Water Framework Directive

A raft of legislation has been recently introduced to reinforce this message, including the EU Water

Framework Directive which has now been fully implemented.

So, if you have not already installed a dedicated wash area to avoid the risk of pollution now is the time to act to ensure your course is environmentally compliant.

Waste2Water two-year interest-free finance

Hundreds of golf courses have installed our system but what if you are keen to make sure you are compliant but are unsure about financing the investment? With investment in a recycling

wash system now an urgent priority to ensure environmental compliance, we are delighted to offer our in-house **two year interest-free finance package**. We fund the scheme ourselves so it couldn't be simpler!

- In-house scheme – so no finance to apply for or forms to fill in!
- Just 8 x quarterly payments!
- Spreads the investment cost over up to three accounting years!

Waste2Water ensures environmental compliance

Installing a Waste2Water Recycling Wash-Off System provides a superb equipment wash facility and ensures compliance with the environmental legislation.

Equipment wash-off, refueling, degreasing, chemical mixing and any other potentially polluting activities can all be undertaken on the pad, removing any risk of groundwater pollution from routine activities.

Better still, the recycling wash system continuously re-uses the same water, reducing wash water usage by more than 90 per cent!

Waste2Water Recycling Wash System approved on Water Technology List (WTL)

Inclusion in the Water Technology List (WTL scheme) provides a very handy cash flow boost with a 100 per cent first year Enhanced Capital Allowance (ECA).

This gives full 100 per cent tax relief against taxable profits in year one – instead of the standard reclaim period of eight years! It sounds a bit complicated but rest assured your accountant will be delighted!

Installing a Waste2Water Recycling Wash System

Installing a Waste2Water system could not be easier, often easily retro-fitting into an existing area. The recycling system ensures environmental compliance, reduces water usage by a massive 90 per cent and tidies up one of the worst aspects of golf course maintenance.

Our above-ground system is very easy to maintain and you can see what's going on, ensuring there are no undetected underground leaks. The above-ground dirt settlement tank allows easy removal of the dirt from the recycling system at no cost! You don't need expensive specialist waste contractors to empty the tanks, as with underground systems!

Tim Earley is the managing director of ESD Waste2Water. If you would like further information on the Waste2Water System or a copy of the Pollution Prevention Guidelines please call. Tel 01782 373 878 / E-mail: info@waste2water.com

Waste2Water

Environmental Sustainability With
Waste2Water's Recycling Wash-Off System

Waste2Water

Recycling Wash-Off System
for Vehicles & Equipment

Visit us
on stand
Purple 436
at BTME



The No. 1 Recycling Wash Off System...

Visit our Stand to find out why!!

**Reduces water usage by 90%
and qualifies for 100%
FYA tax allowance
under the ECA
Scheme**



AUTHORISED
USER NO. 01368

**ESD Waste2Water Europe Ltd,
102A Longton Road, Barlaston,
Staffs, ST12 9AU. England**

Tel : 01782 373 878

E-mail: info@waste2water.com

Web: www.waste2water.com

► seeds, turf and fertilisers buyer's guide

BLEC

The Blec Multi-Seeder (BMS) is perfectly suited for work on both fine turf and amenity type areas. Post-winter, it is the ideal machine for seed top-ups and the reinstatement of damaged areas around the course. The Multi-Seeder, which has been re-engineered under the guidance of the Redexim team, features all new seed ratio and seed feed systems which offer the user incredibly accurate distribution for all seed types.

The twin spiked front rollers can be fixed or left to float and thanks to the pivoting system, can take undulating surfaces easily in its stride. These rollers saturate the surface with up to 1,890 holes per square metre, with the option of an additional spiked rear roller which can further increase the holes per square



meter. The BMS, which is available in 120cm, 160cm and 210cm working widths, has an integrated weight mounting frame, allowing suitcase weights to be added should difficult ground conditions demand additional penetration. It also features two brushes – the first can be adjusted to increase or decrease the pressure applied while the rear brush preens the surface to ensure a tidy finish.

At Dunbar Golf Club, course manager Paul Armour recently took delivery of a BLEC Multi-Seeder 1600, allowing him to increase the frequency of overseeding whilst leaving minimal disruption on the greens. "We were pre-

viously using a disc seeder which left lines in the greens meaning we were restricted to only overseeding between competitions," he explains. "We are currently working on a programme to increase fescue populations on our greens, so by moving over to the Multi-Seeder, a dimple seeder, it leaves much less disruption keeping the golfers and visitors happy. With this machine we get fantastic accuracy with the quantity of seed distribution, so by simply adjusting the rate I know exactly what I'm going to get. The spiked rollers follow the contours, and with the precision of seed delivery, we're achieving good levels of germination."

Web: www.blecmachinery.com

Toro

Mid Kent Golf Club's newly appointed course manager, Darryl Manion, has committed to increasing the club's Toro fleet with a renewal agreement and four new machinery purchases in his first three months at the club in Gravesend.

Darryl arrived at Mid Kent Golf in 2000 and has worked his way up the club through senior and deputy roles before taking on the course manager position. He is dedicated to renewing the current Toro fleet and expanding it further.

He explains: "I'm not interested in changing a system that works. I want to make the club better, not take a step backwards. The service we get from Toro is second to none and to be honest I can't think of anything better to suit the course's needs. Our team works hard to keep standards high, but it would be useless if we didn't have the right equipment behind us, which is why I want to continue with Toro."

With Toro already front and centre at the



club, Darryl explains why expanding is the right choice for Mid Kent: "The design of Toro machinery has always impressed me, they get the job done quickly which saves fuel and their durability in particular is better than any other brand I've used. The quality is undeniable really. I've only been in this role three months, but I'm already looking to the future and to what we can achieve. By renewing machines each year and updating the fleet, I know the quality of the course will only improve. The way I see it, Toro is the future for Mid Kent Golf Club."

Mid Kent Golf Club, which is over a century old, is regularly referred to as a course of classic design and has long enjoyed glowing praise for the fact that the challenge and aesthetic layout of the course Willie Park Jr took great care in creating has never been diluted. This is a situation Darryl is keen to maintain.

"I've had experience with Toro for many years and there's nothing else that meets the same standard. I'm lucky enough to be in a position to make investments to maintain the club's charm and make improvements that mean we stay with the times – I want to take that opportunity and ensure the future of Mid Kent is the best it can be and going forward, that means Toro."

The club currently boasts a comprehensive collection of Toro machines and utility vehicles plus two TYM tractors so there's no question the club has long recognised the value they bring. With a Workman MDX-D and Groundsmaster 4700-D purchased this year, and a Reelmaster 3100-D and Greensmaster Triflex Hybrid 3420 on order, the fleet is expanding and with Darryl in charge there have been no delays in making that happen.

"The new machines are going to be a great addition to the fleet we have already," says Darryl. "Each machine we get from Toro always works perfectly for the job it's intended for, which is what makes them different to other brands. I think my favourite machine is the Reelmaster 3100-D Sidewinder, because I know it's going to be a job well done before I even start. It gives good definition around the greens which is really important and, of course, very satisfying."

Web: reesinkturfcare.co.uk



E-Z-GO

Edge Hill University in Lancashire has purchased the first E-Z-GO 14-seater shuttle bus to be sold in the UK. Local dealer Sharrocks supplied the shuttle bus, as well as nine Cushman Hauler Pro vehicles for navigating the 160-acre campus.

Commenting on the purchase of the E-Z-GO shuttle bus, Fleet Administrator Andy Timon said: "A temporary car parking facility has recently opened on campus to provide more spaces for students. However, whilst still on campus, the car park is a distance from the main hub of the university. We have purchased the E-Z-GO 14-seater Shuttle Bus to provide a shuttle service from the new car park to the centre of campus. Instead of a long walk, it's now a four or five minute comfortable shuttle ride."

Launched last year, the E-Z-GO Shuttle Bus is a 14-seater electric vehicle that is designed to easily transport people around facilities. With a quiet and smooth 72V AC drive train the E-Z-GO Shuttle Bus can operate in indoor and outdoor spaces.

"The new shuttle is totally electric, which means there aren't any engine emissions, and there is also a reduction in noise pollution," Andy continued. "The charge lasts a full day and performs consistently across the different terrains we have on site. As well as complementing our environmental pledge, the shuttle gives a great first impression to visitors and students alike. We pride ourselves on providing the best facilities and learning environment around, and the new E-Z-GO shuttle bus is the latest addition to the University's ongoing investments."

"Thank you to Sharrocks for supplying us with the shuttle bus as well as the new Cushman vehicles. We have been very impressed with the level of service and product knowledge of the staff at Sharrocks and look forward to continuing our strong relationship moving



The Petrol Tank Company

forwards. We are very proud to be the first institution to own an E-Z-GO 14-seater Shuttle Bus in the UK!"

Edge Hill University is based in Ormskirk, close to Liverpool and Manchester. Providing higher education since 1885, Edge Hill is one of the select few to have held the coveted UK University of the Year title, awarded by Times Higher Education (2014/15).

Web: www.ransomesjacobsen.com

The Petrol Tank Company

A single turn key solution.

Installing an onsite petrol tank can be a daunting prospect. Time is a precious commodity and familiarising yourself with changing legislation and rules can be time consuming and one of the benefits of having your own petrol tank on site is to save time.

The answer? A full turn key solution from The Petrol Tank Company. It has manufactured tanks for over 10 years. The whole process is now as easy as making a phone call.

"We can establish the best tank configuration to suit your operation," says Brett Barton. "Depending on your usage and placement we will specify the appropriate pump. This can be a hand pump for a remote location, a small ATEX electric pump or for large scale usage a forecourt style pump."

"Next we will establish the most suitable place on site that will comply with the zoning regulations and allow the safe delivery of petrol with planned safety routes for the tanker driver."

"We will work with you to prepare the documentation for your installation, including zoning diagrams that demonstrate the vapour areas around your tank, which will be supported by a full risk assessment."

"We will then contact petroleum enforcement who we can liaise with and meet on site with yourselves to ensure every box is ticked."

"Once all of this has been done on your behalf your tank will be ready. The Petrol Tank



GreenMech

Company can even supply your petrol. We now offer on site deliveries for our full range of petrol tanks.

"Our fuel management system can be used to track all users of the tank, items that have been fuelled and order a delivery when your petrol tank is running low on petrol."

"This fully managed solution is available from The Petrol Tank Company as is a tank only supply and all stages in-between. Get in contact and talk with us about your requirements and we will find the best solution for your golf club."

Web: www.petroltanks.com

GreenMech

Housing association Karbon Homes is responsible for the management and maintenance of almost 30,000 properties, making it one of the largest organisations of its kind in the north east and Yorkshire. As part of a business partnership with the Byker Community Trust (BCT), Karbon Homes provide BCT with a dedicated grounds maintenance team, responsible for the upkeep of the Grade II listed Byker Estate. Helping grounds maintenance officer Dan Thompson and his team of five with the woodland maintenance is a QuadChip 160 from GreenMech.

The summer sees the majority of the Byker team's time taken up with grass cutting but in the winter the maintenance programme switches over to include leaf clearance, tree work and shrub maintenance. "As well as over 2,500 trees, there are lots of hedgerows and open spaces that all require upkeep" explains Dan, who has been with Karbon Homes for two and a half years. "As the estate was constructed in the 1970's, it's quite complex in nature with tight spaces in which to manoeuvre any equipment we purchase."

"My manager suggested we looked at the QuadChip because of its turntable, giving the operator discretion over the direction of the

► seeds, turf and fertilisers buyer's guide

chip and improving manoeuvrability and safety. Peter Bagguley from GreenMech came in to do the demo and there were a number of factors that confirmed it was going to be the right machine for the estate. Firstly, and importantly, it's under 750kg meaning all the guys can tow and operate it without an additional licence. The hopper is a generous size meaning it can handle larger timber than similar models, and it was also quieter than other chippers we've used which is great for working earlier in urban areas." Following the successful demonstration, Dan took delivery of his GreenMech QuadChip 160 in March 2018, from their local dealer Lloyd.

Prior to its purchase, Dan and the team were borrowing a chipper from another Karbon grounds maintenance team. "Having our own machine means it's there and ready for any response jobs through the summer, and then in use daily for all of the winter maintenance. My team really have their work cut out and having the QuadChip has made the busy winter period that much easier."

Web: www.greenmech.co.uk

Swan Golf Designs

Golf Business International chairman Howard Swan has followed in his father's footsteps in undertaking a renovation programme at Moray GC, in the north-east of Scotland.

Swan, an architect with the third-generation family firm Swan Golf Designs, is now looking ahead to 2019 and the fourth year of a phased project on both the club's courses, which will continue into the 2020s.

Swan's father, Alex, laid out the New Course in the 1970s, alongside the legendary Sir Henry Cotton, while the Old Course, dating from 1889, has long been considered one of Old Tom Morris' best, and is ranked in Scotland's top 25 courses.

Four years ago, Swan visited the club, in Lossiemouth, to evaluate and appraise the 36 holes and see how they could be improved. That programme is now in its third year, with the most recent work seeing new bunkering created on the Old Course's 14th and 16th holes.

Under the auspices of the experienced Swan, that work has been carried out entirely by the club's courses manager, Kevin Thom-



son, and his greenkeeping team, complementing work already undertaken on the first and 17th, which have been redesigned and remodelled.

Simultaneously, the New Course is also undergoing significant renovation and up-grading, with the first, second and fourth holes already completed and is expected to climb the rankings.

Swan said: "I'm privileged to be able to work on a couple of such wonderful links courses, following my father to Moray and looking to achieve and satisfy the club's aspirations.

"They want to see the courses elevated even further in the rankings and sit impressively alongside Royal Dornoch, Castle Stuart, Nairn, and Royal Aberdeen, as the most important links in the Grampian and Highland regions of the home of golf.

"There aren't too many clubs which boast two such courses which are both so highly regarded by all who visit, and I'm now looking forward to phase four in which I anticipate that we will focus on three holes of the New Course."

Web: www.swangolfdesigns.com

Wiedenmann

Two new kit arrivals for a busy Middlesex grounds team are saving up to five working days a month.

The Wiedenmann Terra Spike GXi8 HD and the Wiedenmann Super 500, delivered in October, are significantly reducing time

spent on aeration, collecting and scarifying.

Chris Lynch, grounds manager at John Lyon School, Harrow-on-the-Hill and his two assistants, Mark Chandler and Joe Naughton now have breathing space to tackle different projects. The site, at Sudbury Fields in north west London, has four full size football pitches, three junior size pitches, four training zones and three cricket squares. On any given afternoon up to 200 pupils and PE staff from the independent boys' day school, make full use of the playing facilities.

"Other than our first team football pitch, each pitch and training zone can get used up to nine times per week," said Chris Lynch.

"With our previous aerator, we could expect to cover all 28 acres, minus the cricket squares, in five to six working days. Now with the GXi8 HD, the sports fields with the cricket squares included can be done in less than three days. We're also saving at least two days a week with the Super 500. Just last week all pitches were raked quite roughly to take out dead grass. Lots of material came out. We took the Super 500 across and in one pass it picked everything up. I was beyond impressed. All 28 acres collected with one pass in just over two days."

"In terms of time saved and work quality these machines are fantastic. All of a sudden productivity is increased by a week per month. Over a year we're talking about an extra month to do other work across the site. Any head greenkeepers reading this with a similar amount of usage every day will know



how invaluable that kind of time is to absorb the extra work given to us. I am very fortunate to work for a school that backs me with the machinery needed to keep the surfaces at their best."

The Terra Spike will run at least once every three to four weeks, typically, September through until April or May.

"On 20 mm tines we will comfortably get down to 250 mm as no complex pipework lies beneath any of the pitches. The Terra Spike will not only help repair and replace levels but keep air and water moving through the profile," continued Chris Lynch, who took up his role 2.5 years ago after a 15 year spell at The Harrow School.

"Another key benefit will come during March / April, when 400 tonnes of sand is put down to help aid pitch recovery as part of our renovations. The Terra Spike's efforts will also assist the way we deliver chemical and fertiliser products required for the turf. Sand aids in unlocking positive nutrients locked up in the clay and the Terra Spike will allow the sand to work down into the clay to aid this process. For me the Terra Spike is the easiest machine on the market to use. Its set up is really simply. If you are not happy with something it's a small quick adjustment to the depth or the heave."

Wiedenmann's Super 500 is a three-in-one sweeper, collector, scarifier known across the industry for its versatility and 2.5m³ capacity. The John Lyon team has seamlessly incorporated the Super 500 into their weekly routine.

Web: www.wiedenmann.co.uk

Germinal

Germinal has recruited Alan Thomson as its new amenity technical sales representative for Scotland and the north east of England.



Based from his home in Glasgow, Alan will provide technical sales support to Germinal's customers throughout his region, and will be responsible for promoting the company's popular range of Grade-A sports and amenity grass seed mixtures to golf course greenkeepers, turf growers, sports groundsmen and landscapers.

Currently training with the STRI (Sports Turf Research Institute) to gain his FACTS (Fertiliser Advisers Certification and Training Scheme) qualification, Alan will also be responsible for promoting Germinal's specialist amenity fertiliser range which includes conventional compound products as well as liquid and phased-release fertilisers and specialist sward conditioners. Alan will also promote Germinal's range of regional and general landscaping wildflower seed mixtures.

Alan joins Germinal from Glasgow-based John Deere dealership, Nairn Brown, where he was the company's area sales manager for the central Scotland region. Prior to this he has worked as the Scottish sales manager for Tacit Golf and also has previous greenkeeping experience from his time at Bothwell Castle Golf Club.

Web: www.germinalamenity.com

GripClad

If we could offer you an anti-slip product that is resistant to:

- Corrosion
- Impact
- Spiked shoes (metal and rubber)

- Wear
- Tear
- Salts
- Acids
- Alkalis
- Chemicals
- Abrasion
- Deflection
- Fire

Oh and slipping and tripping ... with no maintenance costs - would you be interested?

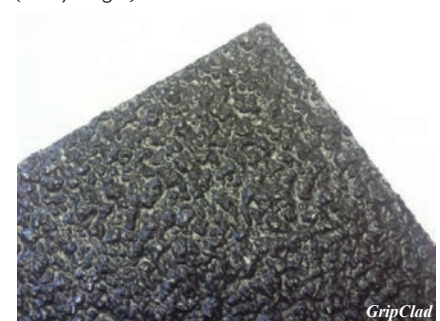
GripClad GRP Safety Treads are a strong one-piece panel which has the lowest life cycle cost and zero maintenance and is the first choice solution to prevent slip accidents. Perfect for sleepers, ramps and walkways.

This product is generating excellent long term cost savings to the golf clubs offering significant benefits in safety for all those walking on golf courses.

Gripclad is a member of the Royal Society for the Prevention of Accidents.

Web: gripclad.co.uk/industries/golf-industry

Tel: 023 8040 6796 or 07803 848819 (Barry Eagle)





Cut to The Chase

The Chase Golf Club is one of the most picturesque courses in Staffordshire. *GreenKeeping* speaks to its course manager, Simon White, about how rough management has attracted wildlife and even increased the speed that the course plays, and why a grass exchange programme has reduced inputs and improved surface quality

Set deep in the heart of Staffordshire countryside and only six miles from the centre of Stafford, The Chase, which now includes a hotel, spa and health club, features a par 72, 6,738 yard course that was originally built upon sand and gravel. This allows fantastic drainage and ensures play can continue uninterrupted from wet weather conditions all 12 months of the year. The course features a mixture of tricky par threes and testing par fives, and has well-placed hazards and wild rough in place.

GreenKeeping caught up with the club's course manager, Simon White, to find out about him – and the work that goes into

maintaining this attractive and popular golf course.

GreenKeeping: What was your path to greenkeeping, where did you study and how long have you now been at The Chase Golf Club?

Simon White: As a keen golfer I started my greenkeeping journey by studying for an HND in golf course management at Reaseheath College in 1996. During my studies I went on a work placement at The Forest of Arden, fortunately being involved in a European Tour event, and my love for the industry began! I then moved around the country before

settling in my current position of course manager at The Chase Golf Club, where I have been since 2007.

GreenKeeping: What is the size of your team and does each member have specific tasks?

Simon White: Our current team consists of five full-time staff, a part-time gardener and through the summer we have seasonal staff. Where possible we try to rotate all our daily tasks, with the exception of spraying, although each team member has their individual strengths, so at times this is taken into account.

GreenKeeping



For the latest news, features, jobs and the ability to connect with thousands of others in the golf industry, follow GreenKeeping on Facebook:

**[www.facebook.com/
GreenKeeping/](http://www.facebook.com/GreenKeeping/)**



MORE



**Want healthy, more attractive lakes and ponds?
Use Otterbine water management systems.**

Otterbine professional aerators and aerating fountains create beautifully clean and sustainable water features that attract wildlife, visitors and players to your club. Make more of your course with Otterbine.

reesinkturfcare.co.uk



Reesink Turfcare UK Limited is authorised and regulated by the Financial Conduct Authority. Images shown for illustration only.

Member of Royal Reesink 

BUNKER EDGING REDEFINED

Make significant reductions in operating costs and enjoy consistent, attractive bunkers that last.

Visit **www.ecobunker.co.uk** to see our range of tried and tested products including our newest innovation, AquaEdge.

Speak to our team on
+44 (0)2920 397 472

Send us an email at
info@ecobunker.co.uk

ECO
BUNKER
build it once

“THE LAST 12 MONTHS HAVE SEEN EXTREME SNOWFALL, RAIN AND TEMPERATURES, BOTH LOW AND HIGH. DESPITE THIS, EXPECTATIONS REMAIN HIGH AND ARE OFTEN FUELLED BY WATCHING PRISTINE GOLF COURSES FROM AROUND THE WORLD ON TV”

GreenKeeping: What would you say are the biggest challenges you currently face and how does this impact on the daily maintenance?

Simon White: I would say the British climate and golfers' / members' expectations. The last 12 months have seen extreme snowfall, rain and temperatures (both low and high) which all offer differing challenges when maintaining the playing surfaces. Despite these conditions, expectations remain high and are often fuelled by watching pristine golf courses from around the world on TV. Factors such as budgets, staff levels and site specifics are overlooked when opinions are formed.

Booking tee times online at very low prices and the removal of joining fees has seen a rise in nomadic golfers and their ability to move between golf clubs more freely. Some may say this offers greater opportunity of gaining new footfall through a club but it also offers less stability.

GreenKeeping: Speaking of which, the 2018 summer was one of the hottest on record. The course is built on sand. What difficulties did you encounter and how did you overcome them?

Simon White: As we are a free draining site we always encounter a degree of 'burning off' during the summer months but in 2018, as the majority of courses experienced, it was taken to a whole new level. We concentrated on ensuring the greens and tees were irrigated as required and this was complemented by a full wetting agent programme on these areas. We have seen how our site responds during extreme conditions of all varieties so the data we have from this will help us plan for the future.

GreenKeeping: What aeration and top-dressing programmes do you use across the course, when do you undertake this and how far in advance is your programme planned?

Simon White: We try to carry out aeration as often as possible with varying methods used depending on conditions and time of year. We also have an autumn maintenance week pre-booked in the club diary. Top-dressing is applied on a little and often basis, using a truck-mounted spinner dresser, when the

weather and the golf diary allow. Due to the nature of the British weather we don't really plan too far in advance, other than the maintenance week, and often re-arrange our tasks when conditions are favourable.

GreenKeeping: Ecology is dear to your heart. What have you implemented across the course?

Simon White: Rough management has been our biggest undertaking with the longer 'tiger rough' being cut and collected across the course to promote the finer grasses. Removal of the coarse grasses has the added benefit of helping to speed up play. We have seen an increase in the number of birds of prey such as buzzards, kestrels and barn owls, which indicates the rough is proving ideal habitat for their prey as well as for hunting. Other notable residents are little owls, skylarks and breeding pairs of brown hares. We are starting to complement this work by creating native wildflower meadows, nest boxes and bug hotels.

GreenKeeping: You've been running a grass exchange programme. What were the deciding reasons for this?

Simon White: I believe that the nature of our site, primarily being free draining, lends itself to the finer grasses and, wanting to push a more sustainable approach, I felt this was good practice for the golf course.

I wanted to improve the quality of the playing surfaces, along with reducing inputs, so eight years ago, once we had good thatch control, we embarked on our over-seeding programme.

GreenKeeping: What supplier and cultivars have you been using, what have impressed you most about these and how have you seen this benefit the course management, the surfaces and playability of the course?

Simon White: We trialled products from a number of the leading grass seed suppliers and, to be honest, found good results from them all. However, the one stand out supplier for us was Germinal. Not only did we have great success with the seed we also found their 'family business' ethics to be very much in



The Chase

line with our own here at The Chase. We over-seed the greens predominantly with Aberroyal and Aberregal browntop bent seed but have now embarked on introducing chewings and slender creeping red fescue, which is so far showing good success. Other areas receive varying ratios of fescue and bent whilst the

tees mix also includes Cabrio dwarf rye to improve wear tolerance. We have seen a marked increase in the bent population in the greens and an overall improvement in all turf surfaces across the golf course.

GreenKeeping: You are a practitioner of

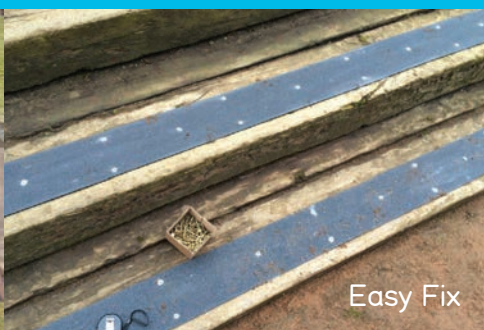
sustainability, what are the factors that have caused you to pursue a more sustainable maintenance programme and how has this benefitted the course?

Simon White: My personal beliefs are for a more eco-friendly approach, my traditional views on greenkeeping and ongoing

The Ultimate Anti-Slip Solution



Safer Steps



Easy Fix



Secure Bridges



New Steps

Screwed Down Custom Safety Treads that will last for years
Improve the Presentation of your course with our simple and tidy product
Over 650 UK and European Golf Clubs use OUR Product

**Call today for advice,
 free quotation or samples**

Tel: 023 8040 6796



Contact us for further details: enquiries@gripclad.co.uk <http://gripclad.co.uk/industries/golf-industry/>

restrictions within the industry are all factors in our individual approach. A major benefit has been reducing our expenditure in certain areas, such as chemical / fungicide use, and re-allocating it in others, such as bio-stimulants and seed, without having to increase our budget. We have seen an increase in the finer grasses and an improvement in the playing surfaces / soil profiles.

GreenKeeping: What machinery fleet are you currently using?

Simon White: The majority of our machinery is Toro, mixed with a few pieces of John Deere equipment.

I have long been a fan of Toro equipment as I feel the quality / precision of cut is fantastic and the longevity of machinery exceeds others I have used.

GreenKeeping: What do you think are the strengths that have carried you through your career and current position at The Chase and how do you keep the course evolving?

Simon White: I would have to say my passion for the industry, hard work, maintaining the basic principles of greenkeeping whilst adapting modern techniques and a willingness to learn. We use feedback, coupled with our



own ideas, to continually evolve the course. The general manager at The Chase is also a professional golfer so, with his support, along with that of the owners, we are able to put strategic plans in place to improve the golf course.

GreenKeeping: What height of cut do you use across the course?

Simon White: Greens, 4mm (5.5mm in winter); tees and approaches, 11mm; fairways 13mm; surrounds 32mm; and rough 50mm. These heights may vary slightly depending on weather conditions and so on.

Over the year our average working week is 40 hours.

GreenKeeping: Training and education are

key to developing a good team, what do you do to ensure you are investing in raising the standard of practice and performance of your team members?

Simon White: We carry out in-house training, offer external training / visits and provide industry literature to help educate and develop each team member. I also try to ensure that the reasons and benefits of all maintenance



► Greenkeeper profile

Simon White



practices are regularly explained.

GreenKeeping: You are looking to implement a bunker improvement programme. What are the reasons for this and what do you hope to achieve long term?

Simon White: Many of our bunkers don't offer the challenge that good course design should.

Our plan is to remove, re-shape and reduce the size of some of our bunkers to improve playability and also reduce the overall maintenance cost of what in essence is a hazard.

GreenKeeping: The pressures on the course manager to deliver a better product are growing year on year and the level of professionalism is rising with this. What do you think are the qualities now needed to meet the

requirements and demands of golfers by someone in your position and how does this help contribute to the business of golf?

Simon White:

- Have a clear goal of what you want to achieve and plan accordingly
- Know / understand your site (what are the limitations and what is realistically achievable?)
- Take photos and keep records
- Listen to feedback, both negative and positive, and use it subjectively
- Stay educated and up to date with modern practices
- Talk to / visit other greenkeepers.

GreenKeeping: What gives you the greatest satisfaction from your job?

Simon White: The greatest satisfaction comes when the end result matches our own high

standards and expectations. It is also great to look back and see what we have achieved in just over 10 years and how the golf course has evolved / improved.

GreenKeeping: With your experience, what advice would you give to youngsters starting out and wanting to pursue a career in the profession?

Simon White: Dedication: As a manager there is nothing better to see than an individual who is dedicated, self-motivated and willing to learn.

Ask questions: No question is silly if you learn something from it.

Take advantage of all opportunities offered within the industry: this includes education, networking and site visits, volunteering (locally or further afield) and working abroad.



Keep records / take photos of your personal achievements: Being able to show evidence of the work you have been involved in is invaluable.

GreenKeeping: What changes do you think

need to be made to benefit the industry sector and profession of the greenkeeper?

Simon White: The industry as a whole needs to keep educating golfers. This has started to some degree but I still feel the professionalism of the industry, and work undertaken, needs to

be highlighted more. Does TV and high profile golfers have a role to play? Chris Wood, and his association with Long Ashton Golf Club and the greens' staff, is a good example of this and similar publicity to that of him helping out on the golf course can only be a good thing.

TRU-TURF

Proven results on the UK's best golf courses

Smooth Operator

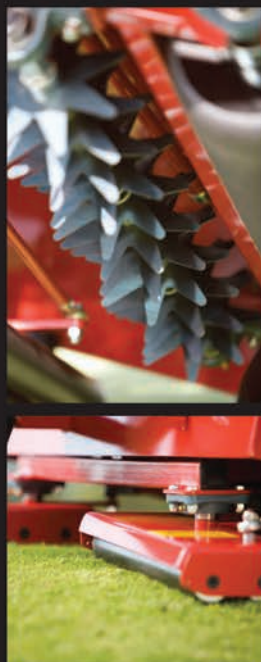
RS48-11E AND RB48-11A GREENS ROLLERS

FEATURES

- Patented triple off-set roller system designed to smooth turf by action — rather than weight
- Proven Honda 6.5hp engine
- Superior Eaton 11 transmission to cope with extreme operating conditions
- Spiker roller operates up to 30mm deep to relieve any compaction (Option on RB48-11A)

BENEFITS

- Increase green speed
- Improved surface smoothness
- Enhanced surface uniformity after coring
- Improved consistency between greens
- Increased mow height while maintaining green speed
- Improved turf health by reducing sward stress




BTME
Stand Red 283

Contact us today for details of your nearest dealer:

The Double A Trading Company Ltd,
Eden Valley Business Park,
East Road, Cupar, Fife KY15 4RB

Telephone: 01334 657602
Web: www.doublea.co.uk
E-mail: sales@doublea.co.uk

 Follow us on Facebook,
search: 'Tru-Turf UK'



Trilo

Stand: Red 204

Web: www.trilo.com

Trilo will be returning to BTME, with its range of turf and waste management machinery. The team will be on hand on stand 204 in the red zone, to discuss the complete portfolio from blowers to scarifiers, and original parts which are available to order through the UK dealer network. Visitors will also be able to see first hand the multi-functional Trilo S3.

The Trilo S3 is well suited to a variety of applications on the golf course. Its large suction capacity paired with its modest dimensions enables efficient collection of leaves, clippings or debris in small areas or during challenging ground conditions. Available with a range of shaft options including a twisted flail or dedicated verti-cut shaft, ideal for scarification on fairways, it becomes a versatile unit for year-round operation. The simplicity of the interchangeable system means the operator can easily switch shafts in as little as one hour.

At Highgate Golf Club in North London,



course manager Derek Mason had a demonstration of the Trilo S3 and was so impressed, he placed the order there and then! "Jeremy Vincent of Trilo and Rob Attewell from our local dealer Ernest Doe brought the S3 in when we were looking for a new machine to combat the excessive leaf-fall we get on our compact, parkland course" explains Derek. "They put the S3's wanderhose to work on one of our large ditches, about 50m long, which it cleared in an unbelievable 20 minutes! It was evident straight away the huge difference it was going to make to our winter maintenance programme."

"Since we've had the S3 it's been out 5

days a week which hasn't gone unnoticed by the members – we have been inundated with comments on how much of a difference it's making to both the presentation and playability of the course. Not only that, but the ease and speed with which we can now tackle the leaves, frees my team up to get other tasks completed. With the purchase of the scarification and brush shaft attachments, which will see the machine in use more year-round, it's without doubt some of the best money we've spent in the last couple of years."

MTD Specialty Turf Products

Stand: Red 253

Web: www.advancedtt.com

Taking up its new position in the red zone, MTD Specialty Turf Products will be returning to BTME in 2019 with a much-expanded line-up. Visitors can see the new INFINICUT® Fixed Head mower – the latest addition to the



award-winning Cub Cadet INFINICUT® range – along with a new cassette in the ATT TMSYSTEM™ and a new face, who will be on hand to offer support and advice to customers on stand 253.

With industry leading cut quality at the centre of Cub Cadet's design philosophy, the INFINICUT® Fixed Head™ enjoys many of the key benefits of the floating head version. Powered by a lithium battery, low emissions and quiet operation are delivered as standard. Available in 22", 26", 30" and 34" cutting widths, the launch of a Fixed Head alternative will help a broader market base to benefit from the numerous technological

advancements the range offers. In its smaller form, the INFINICUT® remains a popular choice with golf courses looking to achieve a clean, sharp cut on greens.

Unlocking the full potential of the INFINICUT®, along with all main-stream makes of triplex greens and lightweight fairway mowers, the unique ATT TMSYSTEM™ continues to be utilised by astute Greenkeepers the world over. Whether the objective is organic matter reduction, grain control, soil gas/air exchange, green speed manipulation, or just top-dressing integration, there is a carefully engineered SMART cassette to meet the need. The latest addition to which is the new SMARTurfClean™ cassette.

Developed in response to industry demands, the patent-pending design effectively cleans turf surfaces with minimal stress to the plant. With the continued non-renewal of plant protection products, skilful mechanical maintenance of turf grass has never been more necessary.

Staff will be on hand to offer tailored advice, including Jonty Norton, MTD's first, dedicated 'on the road' service technician. Due to growing demand and expansion in the golf and sports turf markets, Jonty marks the start of an expanded service capability. With years of golf machinery experience already under his belt, Jonty looks forward to supporting customers, old and new, in Harrogate.

Headland Amenity

Stand: Red 262

Web: www.headlandamenity.com

Retuning to BTME 2019 with its range of plant nutrition products for golf and sports turf will be Headland Amenity. Particular highlights on stand 262 in the red zone will be Mantle, the newest addition to the company's range of non-pesticidal disease management products, along with a new triple-active selective herbicide.

Mantle's water-soluble formulation consists of manganese and zinc, with the addition of 'Harpin' protein – the plant elicitor pioneered by Headland in the UK turf



January 22-24, 2019, Harrogate International Centre

industry, to stimulate the grass plant's own natural defence mechanisms. As well as an important component of two enzymes, manganese is also an activating co-factor for a large number of enzymes required for key functions in the grass plant. One of which aids lignin synthesis taking place in the root, with research showing that applications of manganese can reduce the ability of some root pathogens, such as Take All Patch, to cause damage.

As essential secondary and micronutrients

respectively, magnesium and zinc are also involved in some fundamental processes essential for a healthy plant, such as photosynthesis and protein synthesis. Mantle can be used alongside Headland's '20-20-30' tank mix to enhance plant health and help minimise the effect of disease. Combining Seamac ProTurf Fe and Liquid Turf Hardener plant protectants, together with Turfite elictor, the industry-leading '20-20-30' formulation has shown to be effective in minimising *Microdochium nivale* over the autumn/winter period, when applied prior to the onset of disease.

Headland will also showcase their new triple-active Columbus selective herbicide formulation based on Clopyralid, Fluroxypyr and MCPA.

The unique micro-emulsion formulation controls a wide range of weeds in managed amenity turf.

DLF

Stand: Red 214

Web: www.dlf.co.uk

The Johnsons Sports Seed range has always been focused on quality, providing professional turf managers with the tools to deliver high performance turf that can handle the toughest challenges. 2019 will be no exception. Visitors to stand 214 in the new red zone at BTME will be the first to hear about the new and improved mixture formulations and cultivars across their golf and sports turf seed portfolios.

A complete review of the range will see 11 updated mixture formulations and a new high performance chewings fescue, Bogart. Bogart features in the new six-blend formulation of Johnsons J Fescue, popular for the overseeding of fairways, greens and tees. The new J Fescue blend features 50 per cent slender creeping red fescue and 50 per cent chewings fescue cultivars for improved drought tolerance and

SEE US AT
BTME
2019
STAND 209



CapillaryConcrete



- Improves Drainage
- Improves Playability
- Reduces Maintenance
- Minimises Washdowns
- 10 Year Insured Financial Guarantee
- Get a Return on Investment from your Bunkers

The foundation to successful bunker renovation

For more info visit www.capillaryconcrete.com

or contact Border Sports Services : 01228 561982 Email : info@bordersportsservices.co.uk

disease resistance. Along with a number of other mixtures in the range, from 2019 J Fescue can be specified with DLF's ProNitro seed coating.

Reformulated specifically for use on links courses, the new J Links mixture is a pure slender creeping red fescue blend, comprised of three of the markets highest performing cultivars – Cezanne, Nigella and Beudin. This year, in addition to regular testing, DLF cultivars have been subject to hydroponic salt tolerance trials to confirm their effectiveness in high salt scenarios. This, combined with improved drought tolerance and strong rhizomatous rooting structure, means J Links should deliver strong performance under sustainable management programmes and / or close mown conditions.



DLF

Charterhouse Turf Machinery
Stand: Purple 432

Web: www.charterhouse-tm.co.uk

An array of machines, in both green and red can be found in the purple zone at BTME, as Charterhouse Turf Machinery showcases its natural turf management portfolio on stand 432. Particular highlights will include a selection of machines from the Graden range, including the Z2R turf roller, which will be found beside a variety of units from both Redexim and Rink.

The Graden Z2R (Zero to Roll) turf iron is a self-contained unit that requires no trailer and no unhooking – eliminating any health and safety issues caused by the hitching, lifting and positioning of a traditional roller. It is fitted with four wheels which can be raised and lowered as required, delivering an 8.5mph rolling speed on the greens and quick, convenient



Charterhouse Turf Machinery

transportation around the course. The Graden FLEX system also provides a constant positive pressure across all rollers, conforming to any contours on the greens, whilst keeping a low overall PSI.

The flagship Graden machine, the Contour Sand Injection (CSI) unit, will also be on show. It has the ability to scarify to any depth between 1mm-40mm whilst simultaneously backfilling the grooves with either sand or a combination of sand and seed. Powered by a 20hp V-Twin Honda engine, the CSI has a hydrostatic transmission and a 100kg sand hopper. Its multi-functionality saves the operator time and reduces play downtime, without causing any detrimental effect to ground firmness.

Complementing the Graden machinery, products from Redexim will also be on show. Visitors will be able to see a selection of machines including the iconic Verti-Drain® and the Pedestrian Carrier, as well as the DS800 topdresser from Rink. Available in both trailed and mounted formats, the DS800 has a 0.8m³ hopper and offers a spreading width of up to 12m and a thickness of up to 15mm.

BLEC

Stand: Purple 418

Web: www.blecmachinery.com

BLEC, and its specialised range of landscaping and turfcare equipment, will be returning to BTME in 2019 on stand 418 in the new purple zone. Staff will be on hand to discuss the full BLEC portfolio, which includes both pedestrian and tractor mounted units, with a number of machines showcased on the stand. A particular highlight will be the Laser Grader 1500TPP.

The compact range of BLEC Laser Graders will suit turf professionals who require a strong, accurate grader designed to cope with

demanding conditions. Particularly suited to work on the golf course, it is used to accurately grade the surface to a tolerance of plus or minus 2mm. All models are manufactured to a high standard using quality materials to ensure long life, with proportional electric/hydraulic valves fitted to deliver smoothness and accuracy.

The 1500TPP model features a 1.5m working width and has 6 ripping tines for the loosening of heavily compacted ground. The frame features 4 wheels with each pair controlled by their own hydraulic cylinder, giving the operator the ability to use the machine for dual grading or alternatively, all 4 wheels can be locked for single grading. A self-contained system, complete with its own Briggs & Stratton engine, it can be towed by prime movers already used on site, such as a bunker rake.

All models within the Laser Grader range are set up to accept any make of laser equipment, though a laser control box and



BLEC

receiver can be specified and supplied as an optional extra. Larger models of Laser Grader are also available, offering up to a 2.4m working width, with the professional sports turf contractor in mind.

Rigby Taylor

Stand: Purple 424

Web: www.rigbytaylor.com

Rigby Taylor will be making a major golf industry announcement at BTME to herald the start of a year of celebrations for the company's 100-year anniversary.

While details of the exciting initiative in conjunction with BTME organiser BIGGA will be released at the show, there is a host of



Continue to Learn: www.btme.org.uk/education/seminars



additional reasons why greenkeepers should make a bee-line for Rigby Taylor's expansive stand (stand 424, purple zone), including the launch of a specially formulated range of early season fertilisers, the 2019 grass seed mixtures and the company's 'Active Planning' turf disease prevention programmes.

Rigby Taylor will also be launching a website for its Euroflor urban meadow flower products (www.euroflor.co.uk), and further

announcements will be made on the company's involvement in the irrigation market.

In addition, a golf simulator 'nearest the pin' competition will be staged on every day of the show, in support of the trade charity Perennial.

Dennis and SISIS

Stand: Red 247

www.dennisuk.com / www.sisis.com

Dennis and SISIS will be heading to Harrogate and BTME 2019 on their new stand, located in the red zone on stand 247.

By visiting the Dennis and SISIS stand, greenkeepers, course managers and turf managers responsible for a wide range of various sports surfaces will get the opportunity to find out how the SISIS Rotorake TM1000, the Dennis FT510 and the exciting new Dennis PRO 34R could have a significant impact on the way they manage their turf.

The SISIS Rotorake TM1000 is a tractor mounted heavy duty scarifier and linear aerator and is un-rivalled when it comes to removing and controlling thatch. It includes a collector box and floating unit to follow ground contours. Its contra-rotating reel throws debris forward ensuring a clean, consistent groove resulting in an excellent finish when the time comes to scarify. With interchangeable blades and a quick, simple depth setting without tools, it's no wonder that so many turf managers have reaped the benefits from using the TM1000.

When it comes to all areas of fine turf, the Dennis FT510 professional mower, has for many years, been celebrated for its top performance and durability. With a 51cm working width, the FT510 provides its user with comfort, flexibility and excellent presentation. A true sense of control is obtained through the unique roller clutch drive for a smooth take-up and a variable clip rate helping to create the

Call us today on:
01903 278240
Fax: 01903 278245



Visit our website at:
www.ttirrigation.co.uk
Email: info@ttirrigation.co.uk

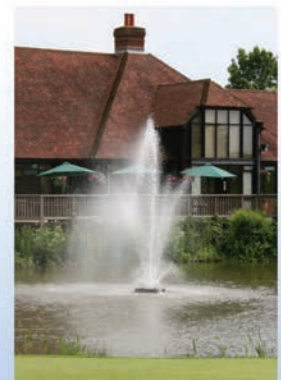


A well-established company, our team's experience and expertise are always on hand to oversee the irrigation process. We believe in providing a friendly and professional service, free from jargon and unnecessary hassle.

A design, supply and installation service is available for all new irrigation systems; in addition we offer bespoke services to all clients with new and existing systems for private gardens, recreational facilities, golf course and sports stadia.

Topturf have now expanded to designing, building, supplying and installing single or multi-pump pump sets.

Topturf are the leading agents for the supply and installation of Otterbine Barebo decorative and industrial aerators, providing quality aeration for the water management of all lakes and ponds.





desired finish. Available with five-bladed and ten-bladed cutting cylinders the machine can be matched to any situation and the interchangeable cassettes can be changed without the requirement of any tools. The range of 11 different cassettes mean that one machine can be used for several key maintenance tasks including scarifying, verticutting or brushing. This feature combined with the click height of cut adjustment system makes it extremely user friendly for its operators.

The PRO 34R was the machine that everyone was waiting in anticipation for – and now it is here. Officially launched just last month (November), this 34" (860mm) rotary mower has been designed to help turf managers achieve an aesthetically pleasing appearance and desired playing surface.

The mower is ideal for sports pitches and lawns producing the enviable 'Dennis Stripes' while a powerful vacuum flow collects debris quickly and efficiently. The angle of the cutting deck and twin blades can be easily adjusted using a single 'click adjuster' ensuring the mower is suitable for changing conditions and meeting operator requirements.

Unique features of the Dennis PRO 34R Rotary Mower include five forward / one reverse selection for speed of operation, 90



litre capacity grass box, fully adjustable angle of deck for changing conditions, two section cast aluminium rear roller, single point height of cut adjustment for ease of operation, optional front wheel or smooth/weile roller options and front brush for standing grasses upright.

Dennis and SISIS have been regular exhibitors at BTME for a number of years and as always, the company's experienced staff will be available to answer any queries and offer valuable advice about the machinery on show.

Waste2Water

Stand: Purple 436

Email: info@waste2water.com

"We're delighted the environmental message is getting through and so many golf courses are installing our Waste2Water recycling wash-off systems," commented a delighted Tim Earley, managing director.



If you've not already done so, upgrading your wash facility should now be an urgent priority to ensure compliance with environmental legislation. To make financing easier, Waste2Water is delighted to re-open its two-year interest-free deal again, which has previously been so successful. Waste2Water finances your extended payment terms itself, so there's no paperwork and nothing to sign, just eight quarterly payments!

"Couldn't be simpler! We are delighted to invite you to our stand to view our system on show and work out a deal," added Tim. "The Waste2Water recycling wash-off system ensures full compliance with the new environmental legislation and reduces water usage by around 90 per cent too! The above-

ground system allows easy maintenance and the innovative design enables the system to be installed outside and used all year-round without the risk of freezing. There is no need to install the systems in a building or a container and there are no underground tanks to empty and maintain either.

"Installation could not be easier, often retro-fitting into an existing area to minimise the budget. And don't forget, the Waste2Water recycling wash-off system is approved on the Water Technology List (WTL), which allows a 100 per cent first year Enhanced Capital Allowance (ECA) to be claimed. It sounds a bit complicated but rest assured your accountant will be delighted!"

TYM Tractors

Stand: Red 202

Web: reesinkturfcare.co.uk

The TYM T393 has been chosen by distributor Reesink Turfcare to headline its TYM tractors stand at BTME because of its perfect positioning to bridge the gap in the TYM line up, from the compact utility range into the mid-duty range.

TYM sales manager, Steven Haynes, says: "The T393 was the logical choice to bring to BTME. It's done hugely well in the UK in its first year, the fact that it's able to do a lot of the tough stuff as a compact is a major benefit which will appeal to the fine turf market. It has already established itself as a comprehensive workhorse, a tractor that can take on the small and big jobs with ease."

A 39hp Yanmar engine, two transmission options: 12x12 speed manual with dash





The future is here.

Tetraploid perennial ryegrass mixtures,
all with **Germin-8T** liquid seed treatment.

Double the number of chromosomes compared to diploid perennials, increased chlorophyll production, healthier plants with improved stress and recovery capability.

- ▶ Now contains *Trichoderma atroviride*
- ▶ Fast germination from 4°C
- ▶ Superior winter wear
- ▶ Increased chlorophyll production
- ▶ Stronger, deeper roots
- ▶ Great drought and disease tolerance
- ▶ Superb colour

Eight recommended mixtures for every surface for the construction, renovation, transitional seeding and repair across a wide range of sports pitch, golf and landscape applications.

Experience the difference.

NOW ALL 'R'
MIXTURES
TREATED WITH
GERMIN-8T



BERNHARD
TURF HEALTH SOLUTIONS

0+0=2
YOU DO THE
MATHS

0% finance + 0% deposit
adds up to a great deal for a
pair of Bernhard sharpening
machines*, so you can benefit
from sharp mowers all year round.



Express Dual 4000 + Anglemaster 4000
Example: 60 months at £540.92+VAT



or



Express Dual 3000MC + Anglemaster 3000MC
Example: 60 months at £447.20+VAT



Call 01788 811600
for more information or to book a demo.

info@bernhard.co.uk www.bernhard.co.uk

*Terms & conditions: Deals based on RRP of machine. Up to 5 Year Lease, 0% APR. No deposit required. Delivery from Stock. Limited time offer - Valid till 30th April 2019. Opportunity to trade in existing machines. Offer available on selected products (4000s and 3000MCs). Cannot be used in conjunction with any other offers and discounts. Subject to terms and conditions and credit approval and Documentation fee: £100.00. Offer valid in the UK only.



**SHARPENING
SOLUTIONS**



**AIR MOVEMENT
SOLUTIONS**



**LIGHTING
SOLUTIONS**

mounted shuttle lever or a three range HST transmission, and the highest lift capabilities in its class at 1200kg, means productivity is at the fore of the T393's design.

It has one of the highest hydraulic flow rates with a maximum output of 42 litres per minute, making it suitable for use with a wide range of hydraulically driven attachments.

The cab features wide opening doors which allows for easy access on and off the tractor and, unlike larger models, there is no intrusive B-post on the tractor to hinder visibility.

Steven continues: "The T393 brings the utmost versatility to our TYM offering in the UK. It's more productive per acre and is the ideal choice for those who don't need a larger framed mid-duty model but need the most amount of power, productivity, versatility and efficiency in a compact package."

Also on stand will be two of 1st Products' rear-mounted tractor attachments: the AERA-Vator and the VC Verti-Cutter. A complementary fit with TYM, this newly introduced capsule range increases the options customers get from their tractor.

"Tractors are of course designed as implement carriers," says Steven. "Making use of this capability with attachments rather than bringing in additional machines for mowing, tilling and shredding saves space in the shed and is much more economical and these products are ideal for that."

Completing the line-up is the popular heavy-duty T503, renowned for being more than capable for all tractor-based applications on the golf course.

Steven concludes: "This is our biggest show in the UK and represents how far the TYM name has come in a few years. We're looking forward to welcoming people to stand 202 in the Red Zone, to show our products existing and new."

Border Sports Services

Stand: Red 209

Web: www.bordersportsservices.co.uk

Bruntsfield Links Golfing Society, founded in 1761 and thus the fourth oldest golf body in the world, has completed a total renovation of the bunkers on its 1898 Willie Park Jr-designed



course, incorporating the Capillary Concrete bunker liner technology.

Bruntsfield has been working with architect Tom Mackenzie on the project, which also includes a number of new greens, a new lake and the reconfiguring of the course routing. Work started last winter, when 42 bunkers were rebuilt, and continued in 2018. The club worked closely with Capillary Concrete distributor Border Sports Services; Border boss Neil Thompson says: "Club CEO Dougie Cleeton approached us when the project with Tom was in its planning stages. They were always going to use a liner, and the greens' staff, including current course manager Neil Hogg, had seen Capillary Concrete in action at Gleneagles and were very impressed with it."

"The project was originally intended to span three phases, but has been combined into two," Thompson continues. "In the first winter, they installed around 2,300 square metres of Capillary Concrete, and they did another 2,000 squares metres last year."

Course manager Neil Hogg says: "One of the things I like best about Capillary Concrete is that it is very easy to install. You can lay it in a certain amount of rain, which is helpful in Scotland, where the weather is unreliable, but if you know bad weather is on the way, you can cancel a delivery at two days' notice without problems. Our contractor, FirstGolf, has

shaped, drained and edged the bunkers, but I knew that my team would be able to install the Capillary Concrete ourselves, which is a great help."

Hogg adds: "This is a major project for a members' club like Bruntsfield – the total investment in the renovation as a whole is in the region of a million pounds. Obviously we want to save money wherever possible, so it is a huge advantage to be able to do the installation ourselves."

"And the first set of bunkers that we did in 2017 have already proved we made a good decision."

"When there has been rain, there has been no washout at all, and the members really love playing out of the bunkers, because they are so consistent."

The Double A Trading Company

Stand: Red 283

Web: www.doublea.co.uk

Double A is excited to unveil to customers its newly designed website. Managing director Sandy Armit says: "We have been working hard over the past several months to update our website design and expand the information and tools available to customers. The goal was to develop a user friendly site that will provide the information you need when you need it. We have expanded our website to include current product information as well as up-to-date news on Double A and our main supplier's right at your fingertips. We will be releasing new product information and company news as it becomes available right on our homepage throughout 2019 and beyond."

Additional expansion on the website also includes:

- Direct links to our Facebook, Twitter and Instagram feeds.
- Online shopping through Sage Pay, Visa and Mastercard.
- A new mobile feature that will optimise your tablet and smartphone experience
- Direct links to Double A's YouTube site and eBay shop.

"Our hope at Double A is that this website will be a valuable tool for all visitors to the site."

Make the most of your multi-gang mower

See us at
BTME 2019
in the **RED ZONE**
Stand on Stand
253



TMSYSTEM

COMPLETE TURF REFINEMENT.

The TMSYSTEM™ is the only cassette system to unlock the full potential of your John Deere, Toro or Jacobsen triple greens or fairway mower. There's an appropriate ATT SMART cassette to transform it into a 'complete' turf maintenance system and meet the needs of turf maintenance professionals. Versatile equipment that saves the need to buy individual machines. Visit our website to learn more.

www.advancedtt.com



MADE IN
SHEFFIELD



@TurfTechnology



Whether this is your first contact with our company or you are a long time user of Double A products and services, we hope that you enjoy browsing through our new site! Feel free to contact us with any questions you have and let us know how we can help you meet your needs," added Sandy.

Bayer

Stand: Red 260

www.environmentalscience.bayer.co.uk

As greenkeepers are feeling the pressure of curative fungicides disappearing from the market, Bayer will be showcasing how a preventative and integrated approach can help overcome disease threats at BTME this year.

The Turf Solutions Team will be guiding visitors through an interactive turf 'canopy' tour. The tour will cover five key areas of an integrated approach to preventative microdochium patch control and those that complete the tour will be rewarded with a BIGGA CPD point.

"Ninety per cent of golf courses suffer with microdochium patch annually, so we hope this learning opportunity can help many members of the industry," says Steve Bishop. "Preventative treatment will soon be the only option to control disease, as more curative fungicides are being taken off the market. However, preventative measures only work if they are put in place early enough. Without curative treatments there is no control once the disease is established and the chemical options are severely limited.

"The early stages of microdochium patch can be very difficult to spot, so we'll provide tips and guidance to help identify the very first signs and symptoms of upcoming infections.

"Moving through the stand, the next stage looks at biological and cultural controls highlighting the importance of non-chemical practices as part of an integrated disease management programme.

"Key cultural controls are examined such as the importance of monitoring the weather, which is a feature of the free to download Bayer TurfXpert app. The different turf fungicide families and active ingredients are



also explained here, to highlight the importance of rotating fungicide groups.

"The penultimate section focuses on turf specific formulations, which ensures preventatively applied fungicide treatments target the correct area of the plant and maximise control.

"We'll demonstrate the importance of turf specific formulations in not just delivering the disease control but additional plant health benefits as well."

The journey finishes with a preview of the new product that will be launched later this year.

"We're always working hard to bring new innovative formulations to the market, with this being the second new active ingredient we've launched in the last two years.

"This new product delivers improved disease control, plant health performance and application flexibility for greenkeepers," explained Steve.

The art of water management

TriCure AD™

A multi-rate surfactant effective on sand, soil and organic matter



DewCure

Specifically formulated to reduce the accumulation of surface moisture on turf



Maximise the **benefits** of just the **right amount...**



Terafirm
Soil Penetrant

Accelerates surface dry-down, reduces puddling and provides a faster-draining, healthier rootzone

Managing Dry-Patch and maintaining optimum soil-water balance, in both wet and dry periods of the season needs proven products that provide consistent results. Carefully managed moisture levels can play a significant role in turf disease reduction.



headland
AMENITY PRODUCTS

01223 491090

info@headlandamenity.com
www.headlandamenity.com

See us at
BTME 2019
Stand 262
in the
Red Zone

Golf Courses

#SoMuchChoice

Machines for all Fine Turf applications -
it's your choice!



Verti-Drain
2216



Speed-Brush



Tool Carrier



Core Collector
1200



Graden CSI

Aerators | Brushes | Tool Carrier

Core Collectors | Verti-cutters

Charterhouse
TURF MACHINERY

See us
at BTME 2019
on Stand 432 in
the Purple
Zone

www.charterhouse-tm.co.uk | 01428 661222

► A day in the life

Mat Edwards

is the managing director of **Looe Golf Club** in Cornwall. Designed by Harry Vardon, the course is set in an area of breathtaking beauty



• What time do you arrive at the club?

Our working hours change throughout the year dependent on daylight hours. In the summer I get in between 6:00 and 6:15am, but if there are competitions on at the weekend, we will sometimes start any time after 5:00am to cut ahead of the first group of golfers. In the winter, when days are at their shortest, we start at 7:30am.

• Can you describe your morning routine?

We will open up all of the sheds, have a quick cup of coffee and arrange the jobs for the day, depending on the tee time book and the weather for the day ahead.

• How many people are there in your team and is it a fair number for your collective workload?

The most we have at one time is four, although more often than not it is two or three as the club job-shares, meaning that occasionally we have to cover shifts in the clubhouse. When everyone is fit it works out, however if someone phones in sick or they are on holiday then it becomes very stretched. I think every club would always wish for extra green staff as there are always jobs to do.

• Do you share tasks?

With such a small workforce, it's impossible not to share tasks. Everyone knows how to do every task, except for spraying which is only done by myself. Also, due to a staffing reshuffle, I have now been made

managing director of Looe Golf Club, so my workload has now increased significantly.

• How do you motivate your colleagues?

We have all known each other for a relatively long time thanks to being members at Looe Golf Club since junior level, so we get on very well, which creates a good working atmosphere. We are always 'winding each other up'! We all play golf as well, both socially and for the club (with one lad playing for Cornwall), which also helps when setting up the course.

• What's your favourite season of the year and why?

It has to be spring. Seeing the course start to recover from the cold, and usually waterlogged, winter months is great as we can get out and finally start getting a little more definition in places where grass growth had slowed or stopped.

• What aspects / functions of your job gives you the greatest satisfaction?

Getting the course completely cut and prepared by Friday, ready for the usually-busy weekend of play is very satisfying. All of our members really appreciate the work we have put in over the last few years to greatly improve the playability and appearance of all areas of the course.

• And what part of it gives you the least satisfaction?

Seeing unrepaired pitch marks, divots and unraked bunkers after a shot has been played is highly frustrating, when they know how much work we put into achieving the standard players now expect. Also, constantly clearing leaves and pine needles in the autumn is very time consuming.

• Have you attended any courses recently?

I am relatively new to the industry having only started at Looe Golf Club in 2014. Personally, I haven't attended any courses since acquiring my spraying licence in 2016, although I do attend the occasional seminar. Over the last two years we have sent a couple of our staff on chainsaw courses which has worked very well, as we have lots of trees around the course. Being built on one of the highest points in Cornwall, we are very exposed to the elements so we often have damage to attend to.

• Do you have a feeding programme for your fairways? How do you ensure your greens have good colour?

Our budget doesn't allow for fairway feeding, only greens, tees and approaches at the moment. With many products being taken off the market due to new legislation, a lot of courses now prefer the use of natural products like seaweed and other bio-stimulants to maintain a healthy sward. Keeping an eye on nutritional inputs is very important as over-encouraging growth can lead to disease, while managing the height of cut around times of high turf stress is also beneficial. We have a very good relationship with Headland Amenity and our local rep, Richard Shapland, lives only 20 minutes away. He is always on hand and willing to give us any advice or information on products and procedures. Headland's C-Complex fertilisers are, in my opinion, the best on the market for use around greens' renovation time.

• How would you improve the greenkeeping industry?

In my opinion, investing in training is key for any new individuals looking

to start a career in the industry. Gaining as much knowledge as possible is a must, especially as legislations change and new rules are introduced by The R&A.

• **Has a golfer ever deliberately directed a ball at you?**

Not to my knowledge, although I have had a ball land on the green a few times whilst I've been mowing it. After a few choice words of wisdom, it hasn't happened again!

• **Are you seeing any evidence of climate change?**

The last year has been a real challenge, not just for us, but for probably every greenkeeper in the country. We went from the wettest winter on record into three weeks of snow, which we hardly ever see in Cornwall. Then we went straight into the driest summer on record. To make matters worse, our watering system died right in the middle of the drought, so most days we were trying to pump water straight out onto the greens. After a few weeks we had to give up and pray for rain. The course has recovered well since then. All of our greens are old clay 'push up' greens with little to no drainage, so should the winters continue to get wetter then we will have to look to install a proper drainage system around the entire course.

• **Have you ever had any mishaps with lakes on the course or had to undertake a rescue of a daft golfer?**

Our only lake is by the 10th tee which, thankfully, is almost impossible

to slip into. On the odd occasion we have had to rescue players in a stranded buggy or someone who has managed to get a buggy beached on one of our mounds!

• **What is the most interesting animal you have seen on your course and how do you support wildlife?**

We quite regularly see deer and foxes running across the course from the adjacent woodland, and we do get inundated with pheasants as there is a shoot not far away. We also have a lot of buzzards nesting in the area. Over the next few years we are going to try and plant some areas of the course that are out of play with wildflower mixes to encourage some new species.

• **What advice would you give to a young greenkeeper starting out today?**

Get as much training as possible and pay attention to those you work with, whilst listening to all instructions.

Getting something wrong on the course could be disastrous to the surface and if it's working with large machinery, could be potentially dangerous.

• **How do you spend your leisure time?**

In the last year myself and my better half have purchased our first house, so all of our spare time is spent working on that. Given the chance (and time) I might pop out for nine holes!



The advertisement features a large circular diagram illustrating the 'Woodland management completes the annual maintenance cycle'. The cycle is represented by a green arrow with four stages: SCARIFYING, FERTILISING, AERATING, and OVERSEEDING. In the center of the cycle, the text reads 'Woodland management completes the annual maintenance cycle'. To the right of the cycle, a GreenMech Airborist 150 machine is shown in a forest setting. A badge in the top right corner states '3 YEAR WARRANTY AS STANDARD' and 'Finance options available via GreenMech Finance'. The GreenMech logo is prominently displayed at the bottom right, with the tagline 'THE PROFESSIONALS' CHOICE'. At the bottom left, the text 'Pedestrian | Road Tow | Tracked | Tractor Mounted' is visible. The bottom right corner contains the website 'www.greenmech.co.uk' and the phone number '01789 400044'.

3 YEAR WARRANTY AS STANDARD
Finance options available via GreenMech Finance

SCARIFYING - FERTILISING
AERATING - OVERSEEDING

Woodland management completes the annual maintenance cycle

GreenMech
THE PROFESSIONALS' CHOICE

Pedestrian | Road Tow | Tracked | Tractor Mounted

www.greenmech.co.uk | 01789 400044

THE GOLF BUSINESS

Recruitment

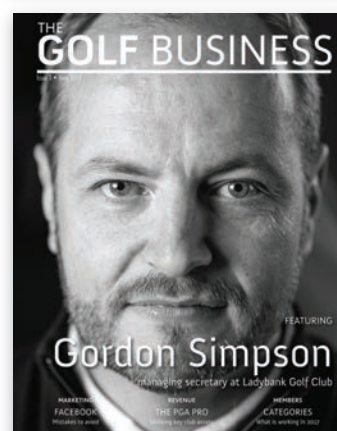
Are you looking to hire
in the golf industry?

Whether you are looking for a new club manager, greenkeeper or PGA professional, ensure your vacancy is listed with the **most read** golf industry publication in the UK and Ireland.

Our audience

- **Print magazine:** Circulated to the club manager and management committees at over 97% of golf clubs in the UK and Ireland
- **Email newsletter:** We have 11,000 subscribers to our weekly email newsletter, golf job alert email and monthly digital magazine
- **Website:** We have over 36,000 unique monthly visitors on thegolfbusiness.co.uk
- **Social media:** We have 26,000 followers on social media

Online listings will appear on The Golf Business website, across social media and within our weekly email newsletter and golf job alerts.



For rates please contact Lewis O'Sullivan on 020 7803 2427
or email lewis@unionpress.co.uk

Join Our Team

Amenity Technical Sales Representative: South Wales, South Midlands and the South West

An exciting opportunity for a high calibre individual to join our specialist team of Amenity Technical Sales Representatives is now available.

Role Requirements

- Confident in giving advice on Germinal's Grade A amenity range of grass seed mixtures, fertilisers and wildflower mixtures.
- Practical knowledge of the amenity industry working with a broad spectrum of customers.
- Self-motivated with the ability to work independently and as part of a team.
- Proven success in on the road sales.
- F.A.C.T.S. qualification desirable but not essential.
- Driven by sales and client satisfaction.

Position offers

Competitive salary, company car and pension package.

Please forward your CV by e-mail to:

careers@germinal.com

Closing date for applications is 11th February 2019.

For full job description go to: germinalamenity.com/careers

 **Germinal.**

GreenKeeping

A small selection of jobs available on the website:

Greenkeeper – golf and country club in Berkshire

Greenkeeper – golf and country club in Essex

Greenkeeper – golf club in Surrey

Greenkeeper – golf and country club in Warwickshire

Greenkeeper – golf resort in Cheshire

Assistant Greenkeeper – world famous English golf club

Assistant Greenkeeper – private members' London club

Greenkeeper Modern Apprenticeship Programme –
exclusive Scottish resort

Trainee Greenkeeper – golf and country club in Kent



To apply for these and many other jobs, or to post your own vacancies, visit:
jobs.thegolfbusiness.co.uk

AERATION

Sisis Rotorake TM1000 & Javelin Aer-Aid Aeration and Scarification with a difference

For more information on our full range
or a no obligation demonstration call
01332 824777 or alternatively
visit www.sisis.com



BUNKER DESIGN

BUNKER EDGING REDEFINED

Reduce your operating costs
by up to 28k per annum and
enjoy consistent, attractive
bunkers that last.

Visit www.ecobunker.co.uk
to see our range of tried and
tested products including our
newest innovation, AquaEdge.

**ECO
BUNKER**
build it once

CLOTHING & FOOTWEAR



Greenkeeper
Wear

www.gkwear.co.uk

Shop Online
Register Now
For Unbeatable Prices
FOR FREE CATALOGUE
Phone 01334 653733

COURSE CONSTRUCTION

JOHN GREASLEY LTD

Specialists in Golf Course Construction
Green, Tee & Bunker Reconstruction,
Drainage Schemes, Lakes & Reservoirs,
Practice Facilities



COMPOST TEA

COURSE EQUIPMENT

"BROKEN TEE MARKER"

FOR BITS-FREE TEES
YOU NEED TO USE THESE
DUAL PURPOSE TEE MARKERS



LESS MAINTENANCE
LESS DOWNTIME
SAVING TIME AND MONEY
Tel: 01633 861 441

www.brokentmarker.com

ANTI-SLIP PRODUCTS

PROFESSIONAL SAFETY FLOOR SOLUTIONS
GRIPCLAD
ANTI-SLIP STAIR & FLOOR SURFACES

Can you afford to ignore
the slip dangers on
your golf course?



Contact us for further details:
Tel: +44 (0) 23 8040 6796
enquiries@gripclad.co.uk
<http://gripclad.co.uk/golf/>

APPS



GreenKeeping

Want to read the latest golf
course management news,
product information and
recruitment opportunities?

Follow
[@greenkeepingmag](https://twitter.com/greenkeepingmag) on
Twitter or visit
www.greenkeepingeu.com

www.greenkeepingeu.com

COURSE MEASUREMENT



TT
TECHNICAL TURF
The choice for turf care

- Sports pitch construction
- Natural and artificial pitches
- Maintenance and renovation
- Land drainage
- Bulk earthwork
- Sports fencing & floodlighting

Plus Air2G2 –
The ultimate decompactor
and aeration system.

Find us on Twitter & Facebook

01664 444 001
technicalturf.co.uk

The Golf Club Managers Website:
www.thegolfbusiness.co.uk

DRAINAGE

Golf Course Drainage
Survey / Design / Installation
Greens / Fairways / Bunkers /
Complete Courses
Plastic Pipe / Turfdry Drainage System



For fast and friendly
Nationwide Service

Contact Melvyn Taylor:
01283 551417 / 07836 259133 / melvyn@turfdry.com
www.turfdry.com

SPEEDCUT CONTRACTORS LTD SPORTSTURF & GOLF COURSE

- Construction
- Drainage
- Renovation

Oxford 01865 331479
www.speedcutcontractors.co.uk

The Golf Club Managers Website:
www.thegolfbusiness.co.uk

SUBSCRIBE NOW! GreenKeeping

IS AN ESSENTIAL READ FOR EVERYONE INVOLVED IN
GOLF COURSE MANAGEMENT & MAINTENANCE

A subscription (12 issues) is only £79 for the UK
Europe £122 ROW 153

Call Lewis O'Sullivan on
020 7803 2427

ENVIRONMENTAL CONSULTANTS



*Leaders in
Sustainable Golf
Course Management*

- Ecology and water
- Environmental advice for course design & remodelling
- Support and verify clubs achieving GEO Certified™ ecolabel

Call Matt on +44 (0)1225 723652
www.johnsassociates.co.uk

FUEL & WATER STORAGE

Southern Tank Services Ltd

- Diesel fuel storage
- Rainwater Harvesting
- Water tanks and Bowsers
- Pressure washers
- Petrol & Hazardous Chemicals



01722 714514
www.tankservices.co.uk

GOLF CARS

*New and re-conditioned.
Petrol and electric.
Purchase and hire.*



Units A2 - A3, Kingsway Business Park,
Forsyth Road, Woking, Surrey. GU21 5SA
01932 358095 - 07768 436529
will.scotson@yamaha-motor.co.uk



www.yamaha-motor.co.uk
www.golfcars.co.uk

IRRIGATION



THE INTELLIGENT USE OF WATER™



Tel: 0845 459 2403
Email: rbuk@rainbird.eu

www.rainbird.eu

**Sharpen
your instincts
with the Toro® Lynx™
Irrigation Control System**



toro.com/lynx

GRASS SEED



GRASS EXPERTS
SINCE 1904

www.barenbrug.co.uk **BARENBRUG**
join the conversation
[BarenbrugUK](https://www.facebook.com/BarenbrugUK)

The Golf Club
Managers Website:
www.thegolfbusiness.co.uk

Intelligent Watering

Practical Impartial
Comprehensive Advice



07889 006812

irrigation@intelligentwatering.co.uk
www.intelligentwatering.co.uk

LWS IRRIGATION the one stop shop

For all your golf, sportsturf and
landscape irrigation needs.



Buy online at www.lws.uk.com

Telephone 0345 230 9697



Call us today on:
01903 278240
For more information visit:
www.tlirrigation.co.uk

Topturf Irrigation is one of the leading irrigation
companies in the UK, with:

- Skilled installation team
- Discounted Trade Counter
- Fully equipped service vans
- Rapid emergency response



Visit our new website and view our discounted online shop



Call now to book space in next month's
Products and Services
guide or to discuss any of your display
advertising requirements

Call Steve Eaves on
020 7803 2453

► products and services

MOWERS

Dennis Razor Ultra
Superbly balanced
mower that's easy
to manoeuvre

For more information or a
no obligation demonstration
call **01332 824777** or
alternatively visit
www.dennisuk.com

DENNIS

World class turf maintenance equipment



SPRAYING

TEAMDEMOUNT PRO
new design features



British designed
and proud of it.

team-sprayers.com

Tel. 01353 661 211

SURFACTANTS

The first name in
soil surfactants.



The last you'll
need to know.

AquaTrols®
aquatrols.com

TOP-DRESSING

noblat

Broadcast or drop
spreaders from 400 to
4000 Litres

self propelled,
de-mount, trailed...

Kept simple on purpose

contact us for a full
brochure



AllezGrow Ltd

2 Mill road, Islip,
NN14 3LB

sales@allezgrow.com

Tel.: 07496742220



MACHINERY REPAIRS



TURF CARE MACHINERY SPECIALISTS:

EFFICIENT AND COMPETITIVE SERVICE
OFFERED FOR YOUR MACHINERY
REPAIR, SERVICING AND REGRINDING.

CALL TODAY...

07590 849 507 | 01606 835 582

peter@middlewichmachinery.co.uk

www.middlewichmachinery.co.uk

SCORECARDS



Eagle has the widest range of branded collateral

www.eagle.uk.com

SIGNS



Every kind of signage requirement - from the driveway
entrance, around the clubhouse, to the tee and fairway.



www.eagle.uk.com

SPRAYING



from
£425

The ideal sprayer for
grass court venues,
golf greens, bowling
greens and cricket
squares, along with
artificial pitches and
domestic lawns



Quality results for
turf care professionals

- Positive displacement pump
- Simple and light to use
- Low ground pressure
- Wheel driven pump
- Consistent application rate
- Robust damage proof boom
- 25L tank
- Bout marker wheels

T: 01353 862044
E: **info@techneat.co.uk**
W: **www.techneat.co.uk**



PETROL TANKS



Above Ground Petrol Storage Experts
Affordable • Safe • Compliant



☎: 01283 820213
sales@petroltanks.com
www.petroiltanks.com

Call now to book space in
next month's
**Products and
Services**

guide or to discuss any of
your display advertising
requirements

Call Steve Eaves on
020 7803 2453

TINES



**STEELMASTER
PRODUCTS**

Extensive range of tines for all
leading makes of machinery

Tel: 01241 853639

Email: **sales@steelmaster.co.uk**
www.steelmaster.co.uk

WATER MANAGEMENT

The secret
of healthy
lakes and
ponds?



Call Reesink Turfcare
on 01480 226948 or
visit **reesinkturfcare.co.uk**



Call now to book space in next month's
Products and Services

guide or to discuss any of your display
advertising requirements

Call Steve Eaves on
020 7803 2453

excellens

Marqués de Cáceres



Tempt your taste buds

excellens, exceptional, irresistible...

New Year, New Technology

Attain, Powered by AquaVita™ Technology



Want a balanced relationship?

Like any relationship, we believe the foundation to a healthy, harmonious environment is balance. Attain, specifically designed for turf managers, helps you to keep that balance, improving interactions between the soil, nutrition uptake and water management to maximise plant health. Attain is the next generation in liquid organics and contains our unique AquaVita technology; a highly refined proprietary bio-nutritional formulation containing both compost and kelp solution bio-extracts.

THE FUTURE OF LIQUID ORGANICS

Attain, derived from natural sources, is not just your average bio-nutritional. It has been developed using an innovative bio-extraction process which promotes optimal plant and soil health for all turf types, including greens, tees, fairways, and sports turf.



Promotes optimal plant and soil health for all turf types



Maximise the benefit of existing nutritional elements



Supports consistent and sustainable root growth

Visit us at **BTME** on **STAND 129** to learn more about Attain

